

Woodbine Entertainment Group's

GREEN INITIATIVES

As of June, 2009



Woodbine Entertainment Group (WEG) is the largest horseracing operator in Canada and the most innovative in North America.

WEG is recognized as a leader in the horse racing industry and strives to be a leading edge corporation when it comes to being a socially responsible corporation



Environmental Stewardship

- Environmental stewardship is a key corporate business strategy, part of five (5) year plan
- Our commitment to reducing our environmental footprint is reflected throughout our business in a manner that minimizes environmental risk, maximizes energy conservation, water and transportation demand management



Energy Management Initiatives

- Participating in load shedding program during peak hours with provincial government's demand response program (DR3).
- Future Plans:
- Investigating feasibility of BioGas and Central Heating Plant at Woodbine site as long term energy management initiatives. Also looking at feasibility of Geothermal/PV Solar Array for Woodbine Live! Project.
- Retrofit Woodbine Track lighting systems to improve energy efficiencies.



Energy Management Initiatives

(cont'd)

- \$5.0m energy retrofit allowed WEG to reduce its energy by \$500,000 per year.
- Installed SMARTD chillers at Mohawk requiring 50% less power consumption;
- Reduced summer energy consumption by more than 10% as a result of the building automation control system which identified inefficiencies. Further upgrades for 2009 (\$250k)



Facility Recycling Initiatives

- Unused computer equipment is directed to reputable computer re-furbishing companies;
- Old cell phones and used printer cartridges are donated to the charity “Phones for Food” to raise funds for local food banks.



Recycling Initiatives

- Kitchen organic waste 100% recycled
- Cooking Oil and Greases 100% recycled
- Cardboard 100% recycled
- Glass bottles 100% recycled
- Waste paper from printing 100% recycled
- Metal 90% recycled
- Fluorescent bulbs 80% recycled
- Yard waste 100%



Water Management

- The installation of the new state of the art Polytrack racing surface in 2006 reduced water consumption by 17.5 million gallons
- In 2006/07 removed 25,000 cubic metres of sediment from storm pond to increase storage capacity, improve water quality and make more water available for reuse.
- Approximately 11.4 million gallons of water recycled from WEG's five storm water ponds annually.



Water Management (cont'd)

Mohawk:

- 2008 – Utilized ultra violet techniques in addition to chlorination to improve safety of water supply



Green Cleaning - Application of Business (Procurement)

- Identify business need
- Source out potential supplier
- Practical application test conducted
- Feedback is collected
- Decision is made factoring in employee safety, product effectiveness, availability, and cost

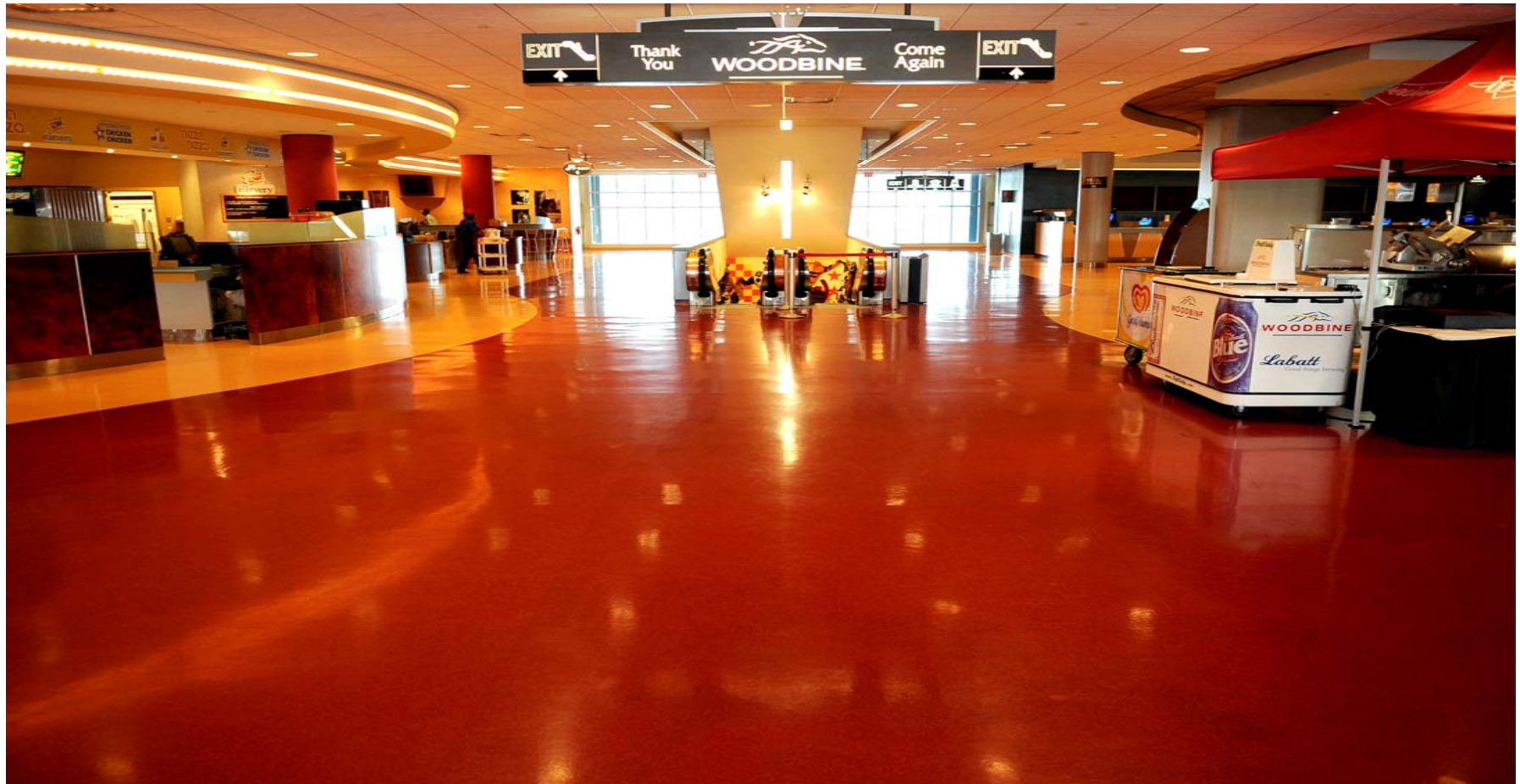


Marmoleum Floor Restoration Project

- **MARMOLEUM RESTORATION**
 - 65,000 sq feet of material
 - \$750,000 replacement cost
 - \$65,000 restoration cost
 - Approx. 6 weeks to complete
 - Extended life of floor 10+ years
- Avoided the disposal of 29,285 pounds of material to landfill



Marmoleum Restoration Project - After



Woodbine's – Standardbred Paddock

- \$11.5 million project
- 62,000 square feet in size
- 123 stalls
- Wheelchair accessible
- Sprinkler system installed for fire safety



Woodbine's – Standardbred Paddock

Green Construction Initiatives:

- Fibre cement board cladding
- Granular materials used on site were recycled from other projects
- Granular base materials for parking lot is composed of 100% recycled concrete



Woodbine's – Standardbred Paddock (cont'd)

- Majority of top soil used on site was recycled and stock piled
- Majority of materials used were procured from local suppliers, reducing carbon emissions transport
- Sheet metal products contain 80% recycled content
- Recycled rubber mats/bricks used throughout facility



Nutrient Management

- 42 barns
- 2200 horses
- Generates 40,000 tons of manure/straw/shavings mix
- Cost \$600K to dispose of annually to mushroom farms and topsoil/landscaping suppliers



Nutrient Management (cont'd)

PROPOSED BIOGAS FACILITY

- Needs 60,000 tons of manure/organics to operate anaerobic digester, more passive compared to high intensity burning option
- 40,000 tons generated onsite
- Additional material to be trucked in from surrounding business to supplement onsite manure
- Plant to produce compost and fertilizer pellets as an end product
- Methane could also be used to drive a generator to produce electricity – potential to produce 2 – 3 MW of power
- Electricity to be sold back into the grid under long term OPA contracts, improved Green Act pricing.
- Annual disposal cost avoidance of \$300K per year (still some costs to get manure from barn storage bins to biogas facility)
- Possible ROI of less than 7 years



Supporting Community Initiatives

- Earth Hour
- Annual Nasagaweya Rural Roadside Clean-up in Milton
- Community Clean-up-Day Smitherfield and Highfield Parks in Etobicoke
- Road Safety/Truck Inspection in parking lots – inspection for faulty equipment and/or carbon emissions



Recognitions/Awards

Recycling



- Recycling Council of Ontario – 2008 Silver Waste Minimization Award for Facilities Management

Energy Conservation



- Building Owners and Managers Association - Power Partner Recognition Award for energy conservation and environmental stewardship



Partners for the Planet



Logo



Front End Loader Truck



Multi-Section Recycling Center



Why is Partners in Project Green Important to Woodbine

WEG has been working with its business partners and consultants on sustainable practices.

“Partners in Project Green” enables WEG to expand its business network and work cooperatively with other environmentally conscious businesses in the community.

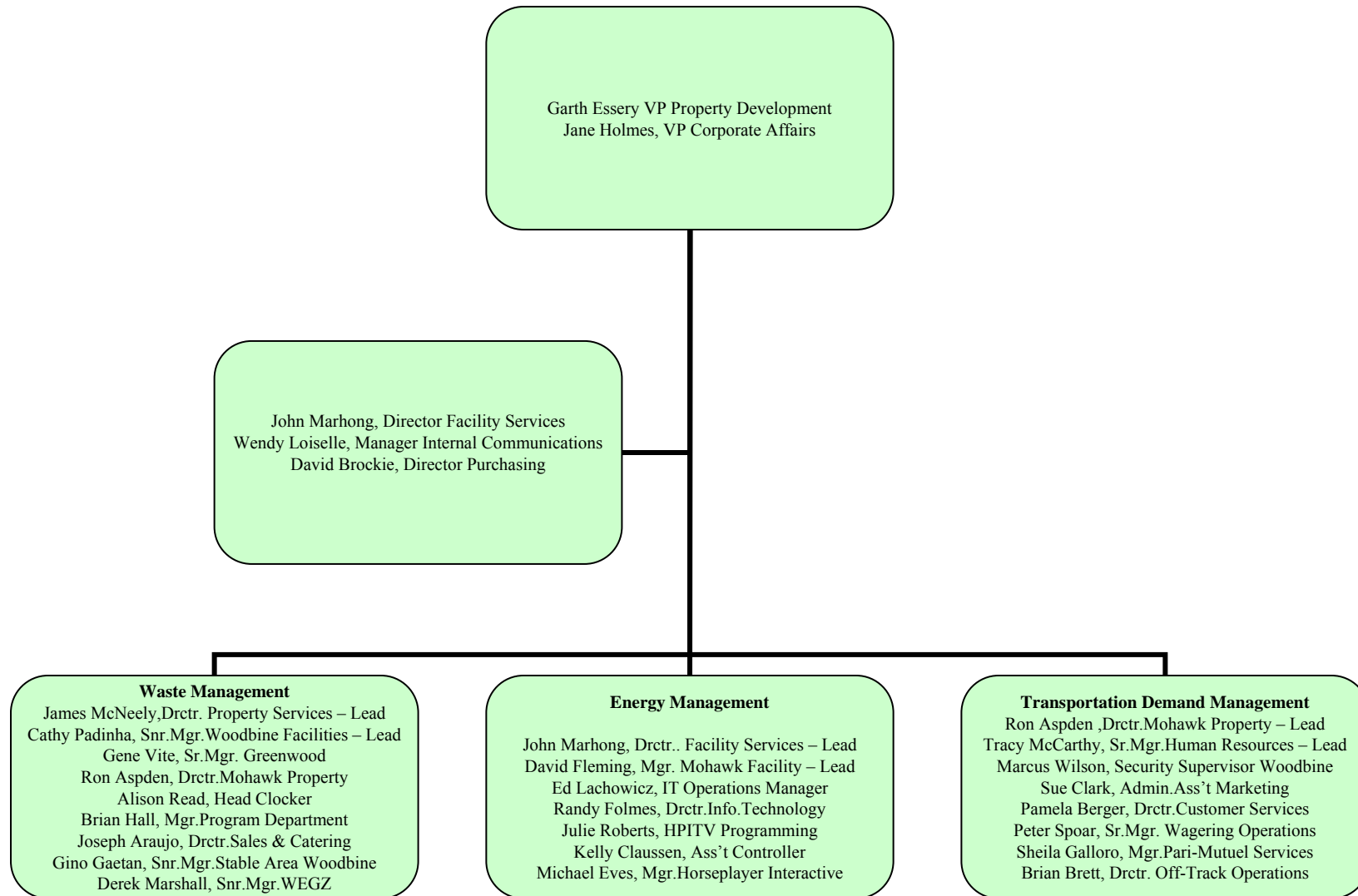


Relevance of Programs

- ✓ **Eco-Efficiency**
- ✓ **Green Building Retrofit**
- ✓ **Sustainable Transportation**
- ✓ **Green Purchasing Blocks**
- ✓ **By-Product Exchange**
- ✓ **Green Site Initiatives**
- ✓ **Education and Networking**



Green Action Team



Energy Management

Team Projects:

Lighting Audit:

- All front & back of house – all locations
- Backstretch/tunnels/barns
- When can the lights go off? (look at building timers)

1. Prepare a Base Load Reduction Plan:

- Lighting use in unoccupied areas
- Occupancy sensors

2. Special Projects:

- Demand Response
- Track Lighting
- Building Automation System
- Digital Broadcasting Conversion

4. Alternative Sources (wind, solar, geothermal)



Waste Management

Team Projects:

1. **WEG's annual Waste audit:**
 - Work with Working Knowledge to collect required information for audit
 - TSSA

2. **Develop Plan to Raise Employee/Public Awareness of WEG's Reduce, Re-use and Recycling Program:**
 - Staff training (Train the Trainer Program)

3. **Audit of Recycle Bins**
 - Front & back of the house (all WEG locations)
 - What do we have now? What do we need?
 - Cost Analysis



Transportation Demand Management

Team Projects:

1. **Fleet Audit:**
 - Assets
 - Fuel consumption
 - GPS Tracking/Idling

2. **Employee Participation:**
 - Carpooling/Ride Share (preferred parking)
 - BUG Bike User Group (bike storage, shower/locker facilities)
 - Transit Partnership
 - Bike Lane

3. **Develop Employee Awareness Campaign for Reducing Vehicle Use:**
 - Healthy Workplace Campaign

4. **Alternative Vehicles:**
 - Kubota

